

strategy *Live!*

Internet Based Transportation Software

Carrier Center

Strategy Systems, Inc.
PO Box 2136
Rogers, AR 72757
(479) 271-7400

Carrier Center Access 1
Configuring Carriers for Access 1
Carrier Login 1
Carrier Options 2
 Loads Available for Carriers 2
 Your Available Equipment..... 3

Carrier Center Access

All Strategy Live brokerage customers have the ability to give access to their carriers. The carriers are able to post available equipment and to view a list of available loads with the option to contact the booking CSR via e-mail (for this option to work properly each user must have an e-mail address on their profile).

*****YOU MUST LOGOUT OF STRATEGY LIVE BEFORE ATTEMPTING TO LOGIN AS A CARRIER*****

Configuring Carriers for Access

For a carrier to have access to the system they must have a password entered on their carrier record. Go to Administration > File Maintenance > Carriers to assign a password. Find the carrier and click on the number to pull up the record. Enter the desired password and click the Save button.

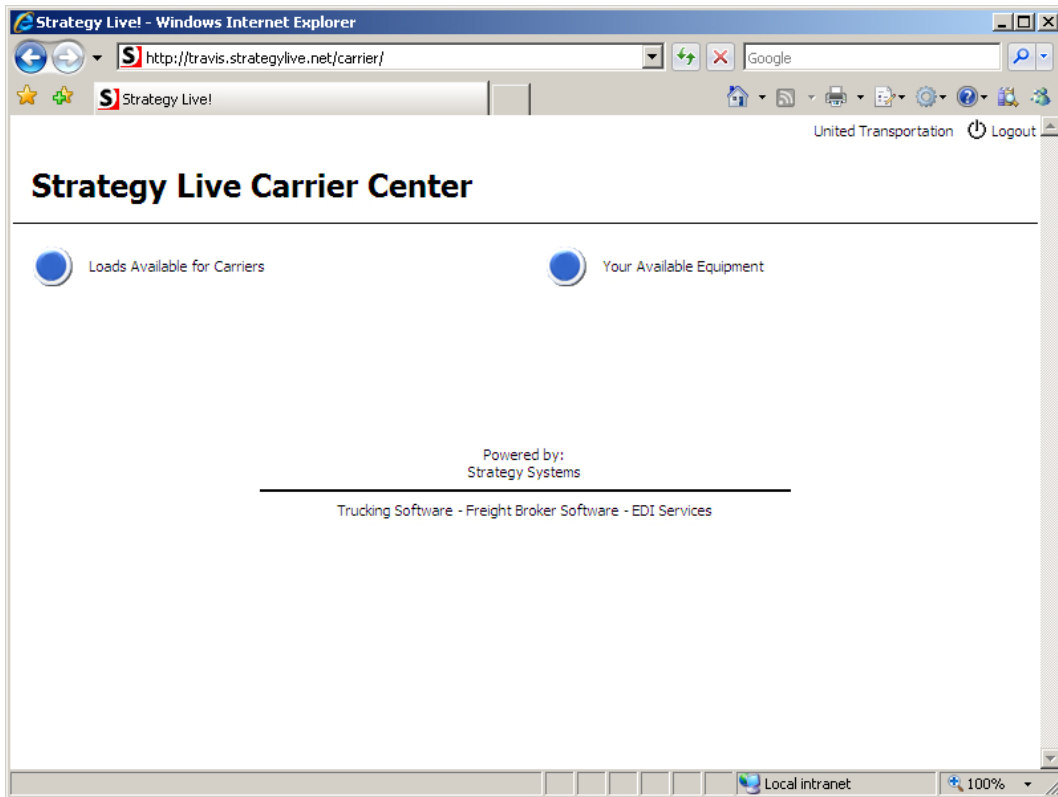
Number	00001	Status	Active		
Name	United Transportation	MC #			
Street	7394 S Beach Boulevard	Company #	Travis's Trucking Company		
Street 2		Password	UNITED		
City	Jacksonville	State	FL	Zip	32099
Contact Name	Bob Jones	Phone	904-123-4567	Fax	801-457-6176
Contact 2		Phone 2		Email	
Signed Contract	<input checked="" type="radio"/> Yes <input type="radio"/> No				
Comments					
Equipment	Count	Equipment	Count		
Dry Van	1				

Carrier Login

Send the carrier to <http://example.strategylive.net/carrier> (example should be your Strategy Live address). Their user name is the carrier number assigned to them in Strategy Live and the password is whatever is entered on the carrier record.

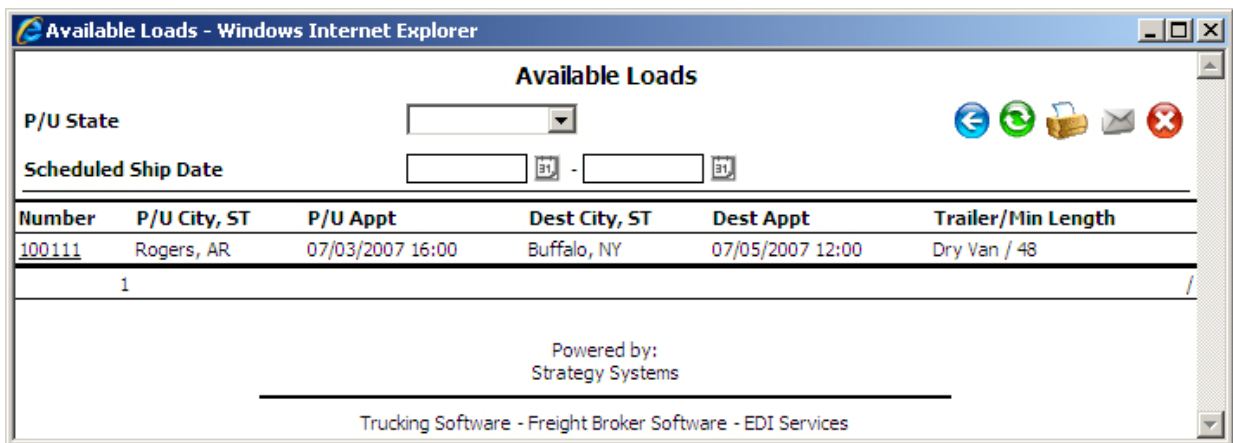
Carrier Options

Once the carrier is logged in they will have two options to select from: Loads Available for Carriers and Your Available Equipment.



Loads Available for Carriers

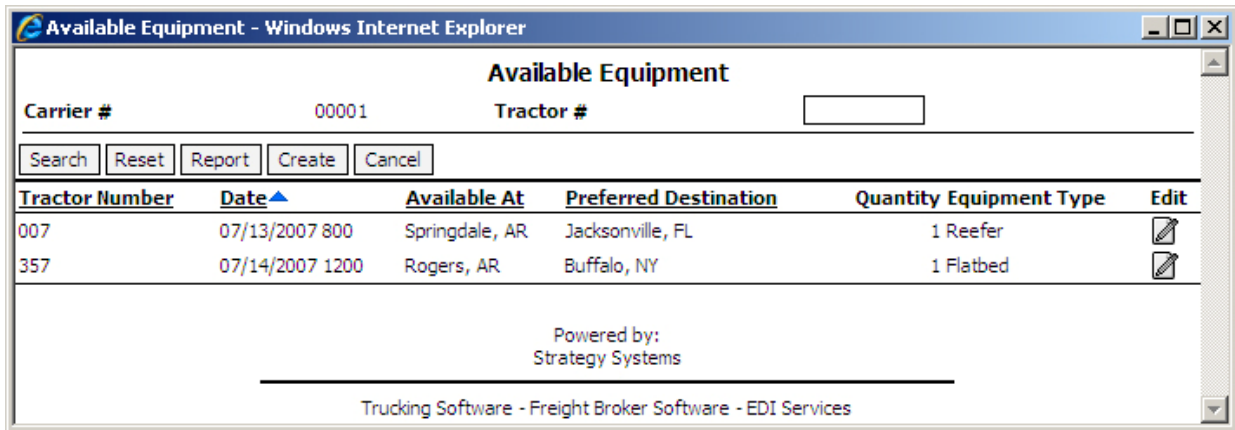
This is just a listing of all of the available loads that are entered on your system. This is accessible simply by clicking either the blue button or the text.





The carrier can request more information via e-mail by clicking on the load number. Please note for this feature to work each user should have their e-mail address on their profile.

Your Available Equipment

This is a way for carriers to enter equipment that they have available for your use. This is accessible simply by clicking either the blue button or the text.



The screenshot shows a web browser window titled "Available Equipment - Windows Internet Explorer". The page content includes a header "Available Equipment", a form for "Carrier #" (00001) and "Tractor #" (empty), and a row of buttons: Search, Reset, Report, Create, and Cancel. Below this is a table with the following data:

Tractor Number	Date ▲	Available At	Preferred Destination	Quantity	Equipment Type	Edit
007	07/13/2007	800 Springdale, AR	Jacksonville, FL	1	Reefer	
357	07/14/2007	1200 Rogers, AR	Buffalo, NY	1	Flatbed	

At the bottom of the page, it says "Powered by: Strategy Systems" and "Trucking Software - Freight Broker Software - EDI Services".

The carrier can add new available equipment listings by clicking the Create button or they can edit available equipment that is already listed by clicking the edit link in the far right column.